

PLAN COMMISSION WORKSHOP

MONDAY, OCTOBER 20, 2025 — 6:00-8:30 PM
WAUKESHA COUNTY ADMINISTRATION CENTER
ROOM 255—515 W MORELAND BLVD, WAUKESHA

PLAN COMMISSION FUNDAMENTALS

This session is designed for members of your plan commission and others that affect local land use decision-making. We'll review the roles and responsibilities of the plan commission and look at three primary tools for decision-making: the comprehensive plan, zoning ordinance, and subdivision ordinance. We'll discuss plan and ordinance updates, and the role of the plan commission in reviewing rezones, conditional uses and plats.

WHO SHOULD ATTEND?

- Plan Commission members
- Town Board, Village Board, City Council, or County Board members
- Clerks, administrators, and staff who support these positions

REGISTRATION

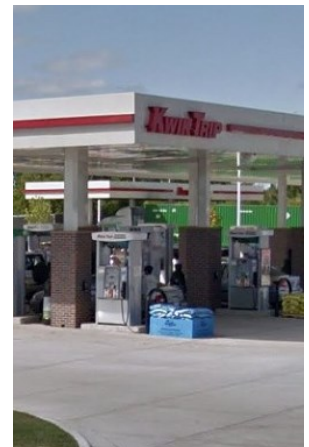
The cost of the workshop is \$40 and includes light refreshments.

Registration is limited to the first 60 participants.

Register: www.regpack.com/reg/ExtPlanComm25



Center for Land Use Education
College of Natural Resources
University of Wisconsin-Stevens Point



Direct registration questions to Lisa Boyer at
lboyer@waukeshacounty.gov or call 262-548-7775

All other questions can be directed to Nate Winkler
at npwinkler@wisc.edu or call 262-548-7788



Extension
UNIVERSITY OF WISCONSIN-MADISON